

First International Conference organized within the framework of  
PolyUrbanWaters Research and Project Network (BMBF 2019-2025)

# POLYURBAN WATERS

**Polycentric management of urban  
waters in fast-growing cities and  
peri-urban areas in Southeast Asia**

Frank W. Fladerer, BORDA Southeast Asia

KEYNOTE SESSION

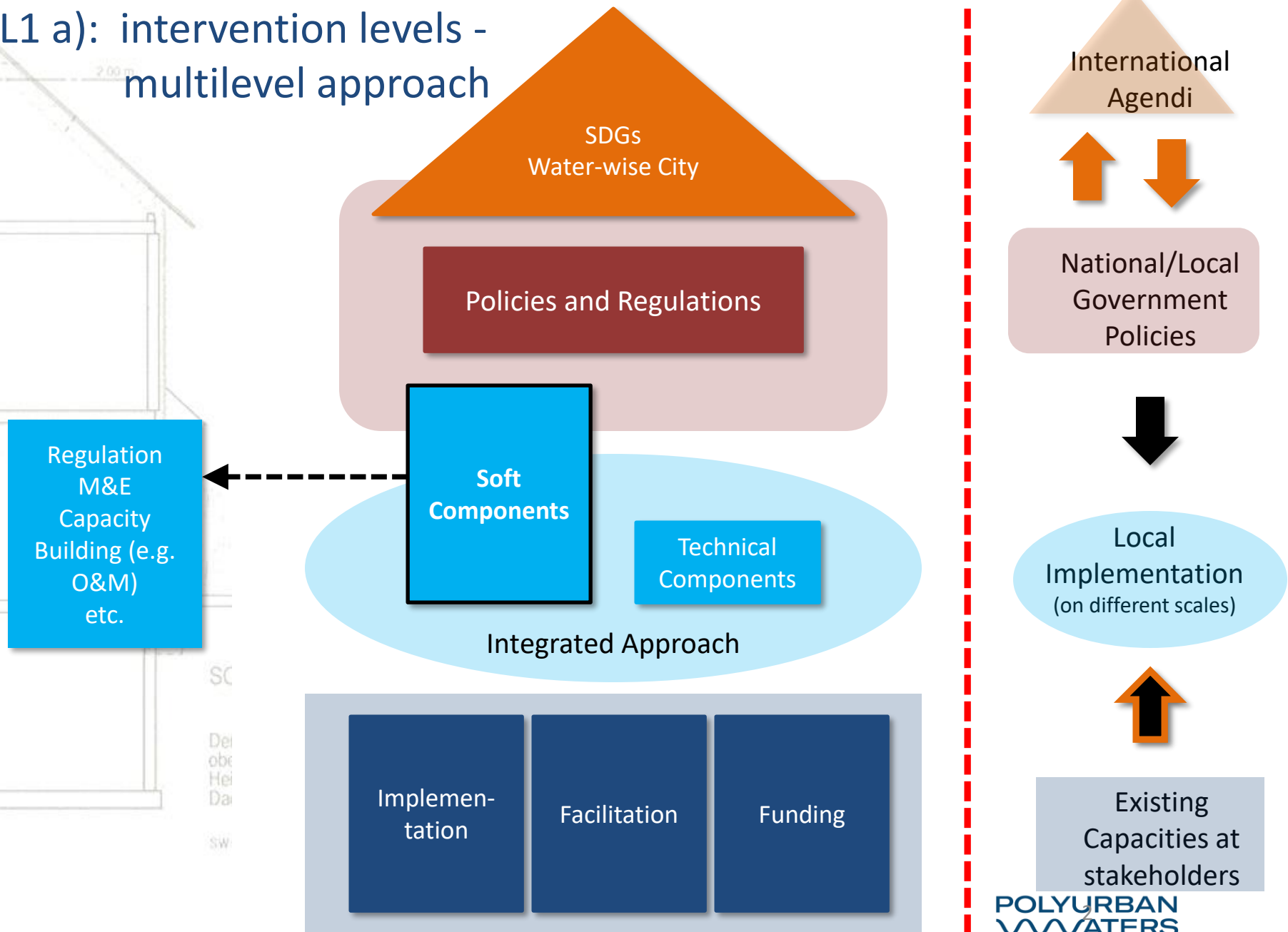
**Urban Water Resources in the World and in Southeast Asia**

**Institutional challenges for polycentric approaches for urban  
water management in Southeast Asia**

**24-25<sup>th</sup>  
March 2021**

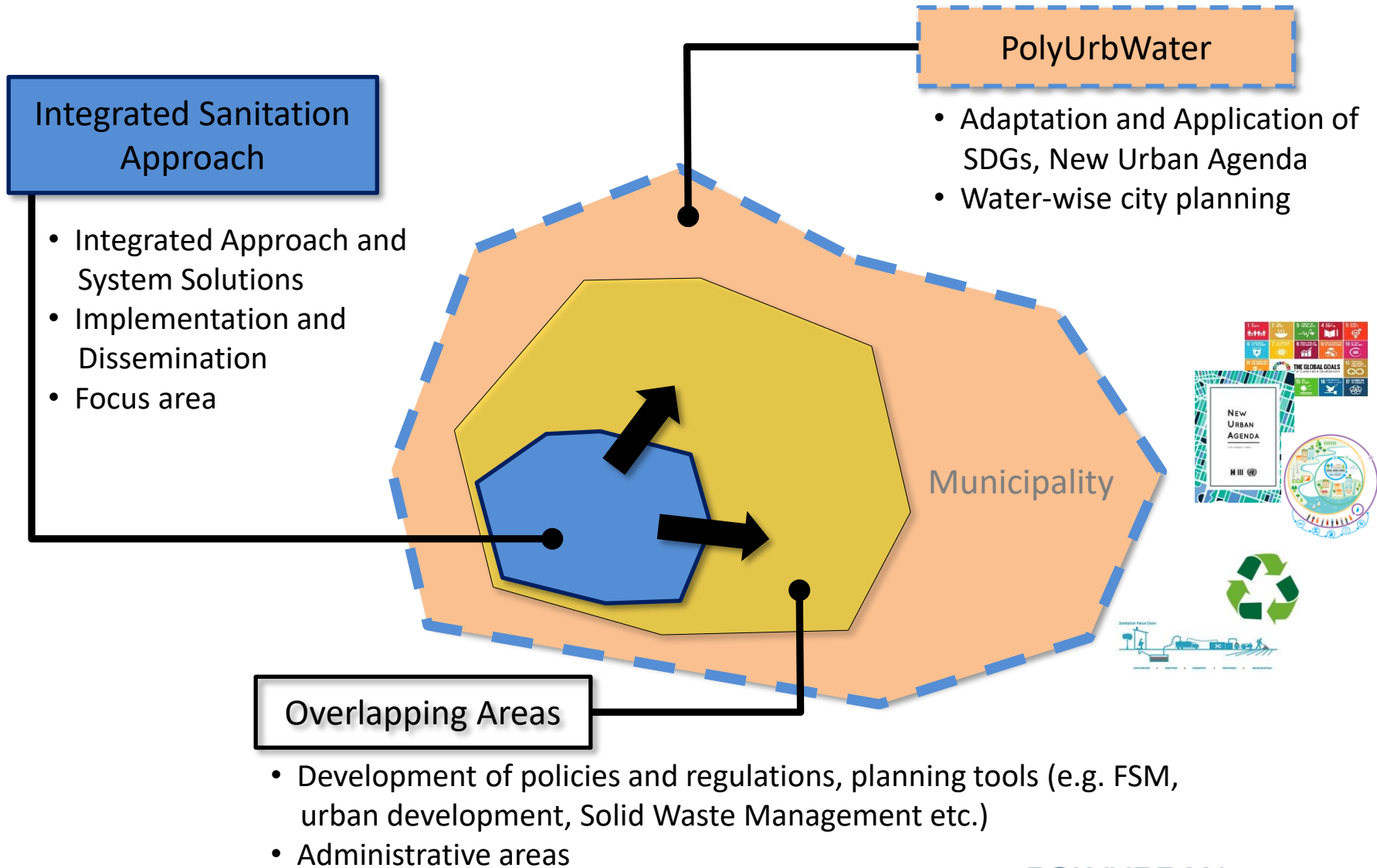
**Online /  
Berlin / Kratie /  
Sleman / Vientiane**

# LL1 a): intervention levels - multilevel approach



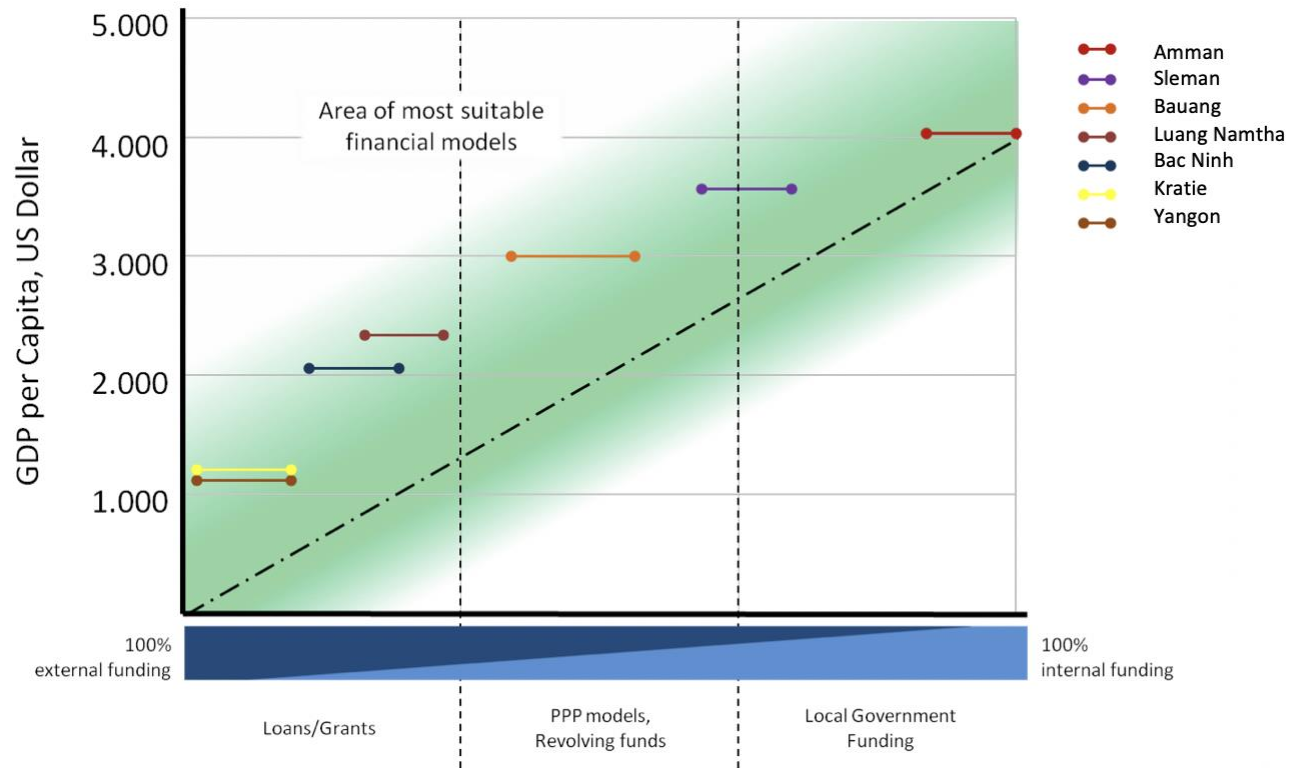
## LL1 b): Paving the path for polycentric approaches

### From local implementations via Integrated Sanitation



# LL2: Funding Considerations

## GDP related Financing Schemes



# LL3: Regional Community of Practitioners



Exchange

Experience

Capacity

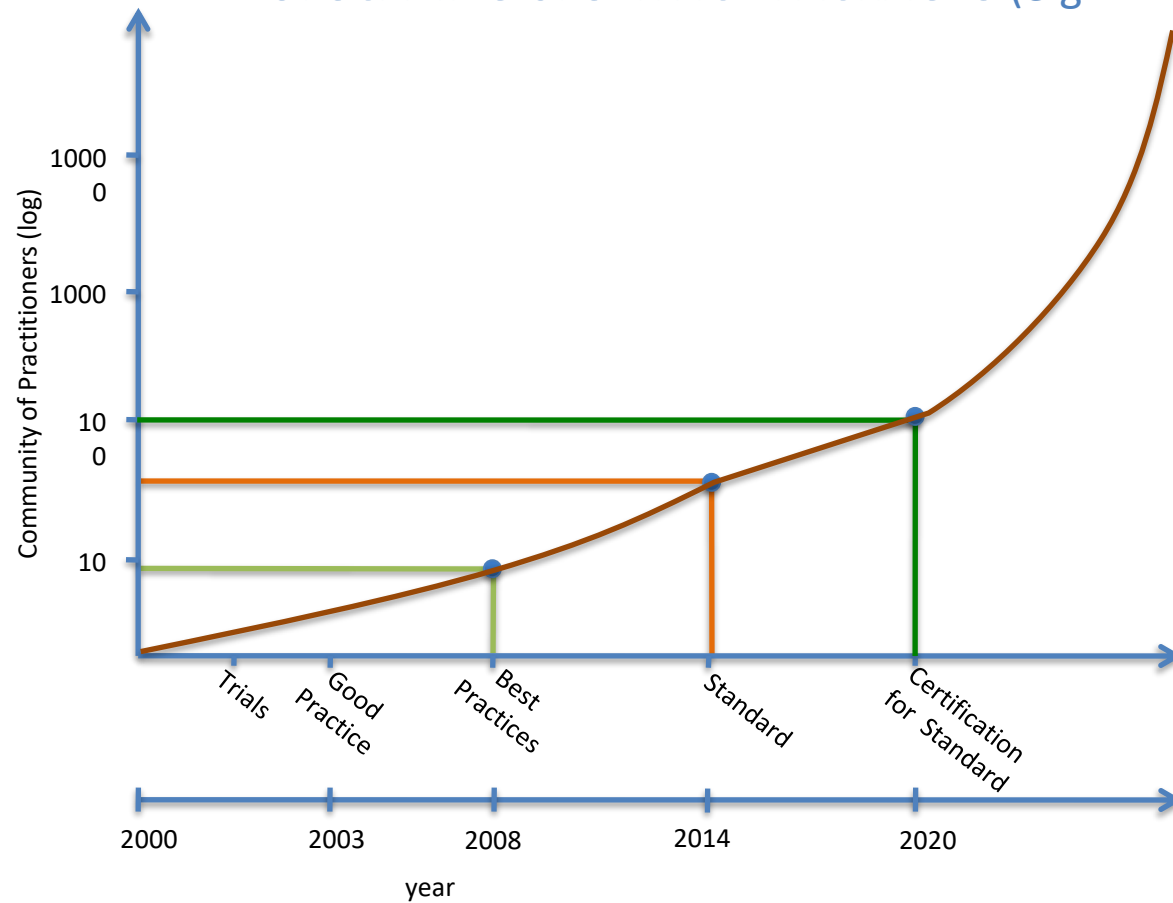
Innovation

Cooperation

City Alliance

## LL4: From Best Practices to Standards and QMS

### UPSCALING of SERVICE PACKAGES (e.g. DEWATS, ISA...)

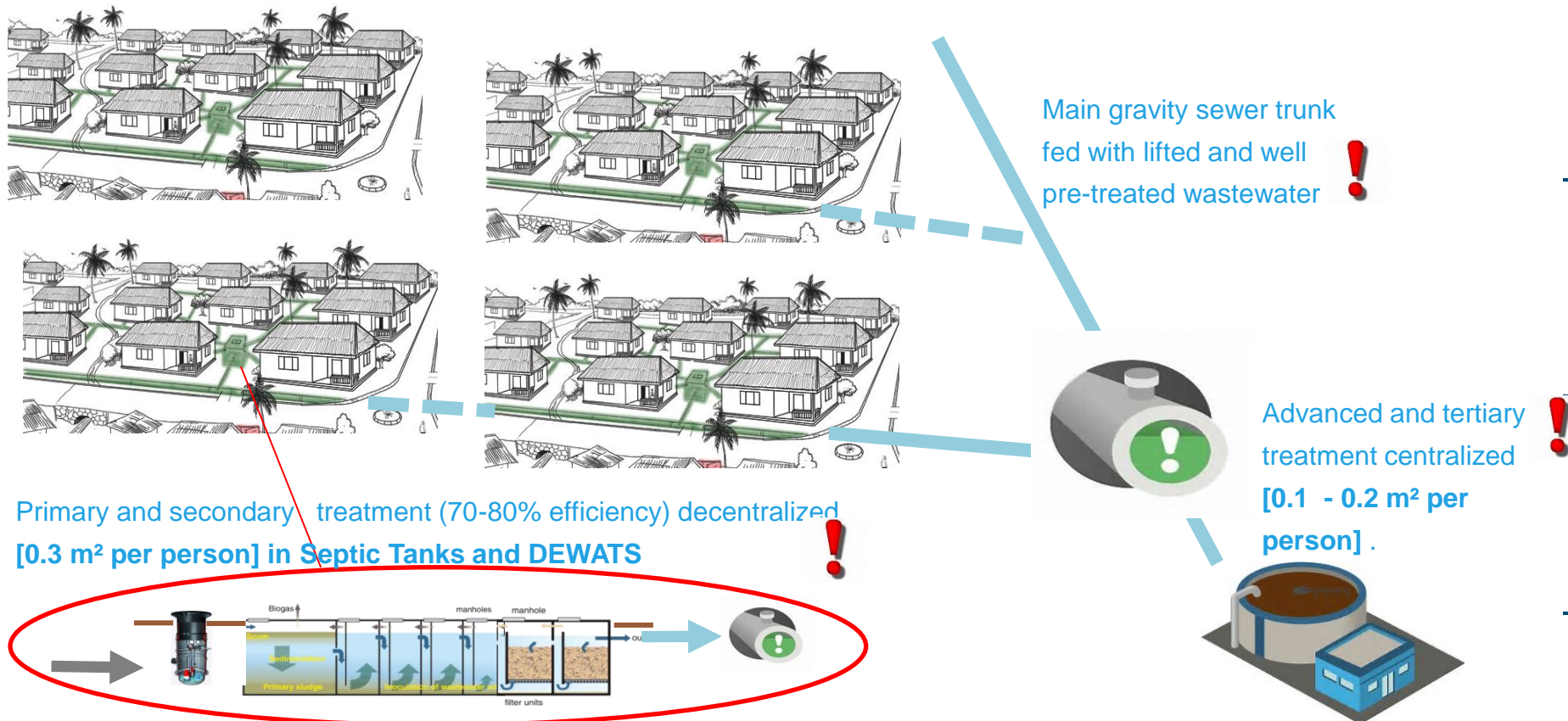


## LL5: A call for progressive implementation

- All future wastewater treatment schemes must meet legal discharge standards, defined within the legislation of almost all countries.
- Those standards, however, are rarely met (up to 90 per cent...).
- Too often, standards thereby achieve adverse effects, as they are considered unrealistic and any cost efficient intervention, improving the current situation but not meeting the discharge standard, would legally threaten its initiator.
- the principle of "progressive implementation" as part and parcel of the indicator and monitoring structure, allowing for a progressive treatment performance with a **phased approach** over the next 15 years, needs to be reflected in regulatory framework



# LL5: Example ISA: Progressively connecting ISA Clusters to larger service areas at later stage



Also applicable for Progressively Increasing Treatment performance

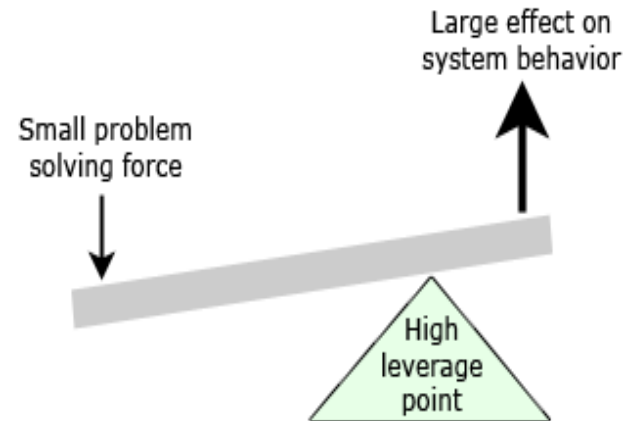


## LL6: Leveraging policy entry points

### Co-beneficiary attitude within LG and other stakeholders

Small Actions can yield large results:

A “**leverage point**” is a place in a system where a large change towards desired behavior or results can be accomplished by applying relatively few resources.



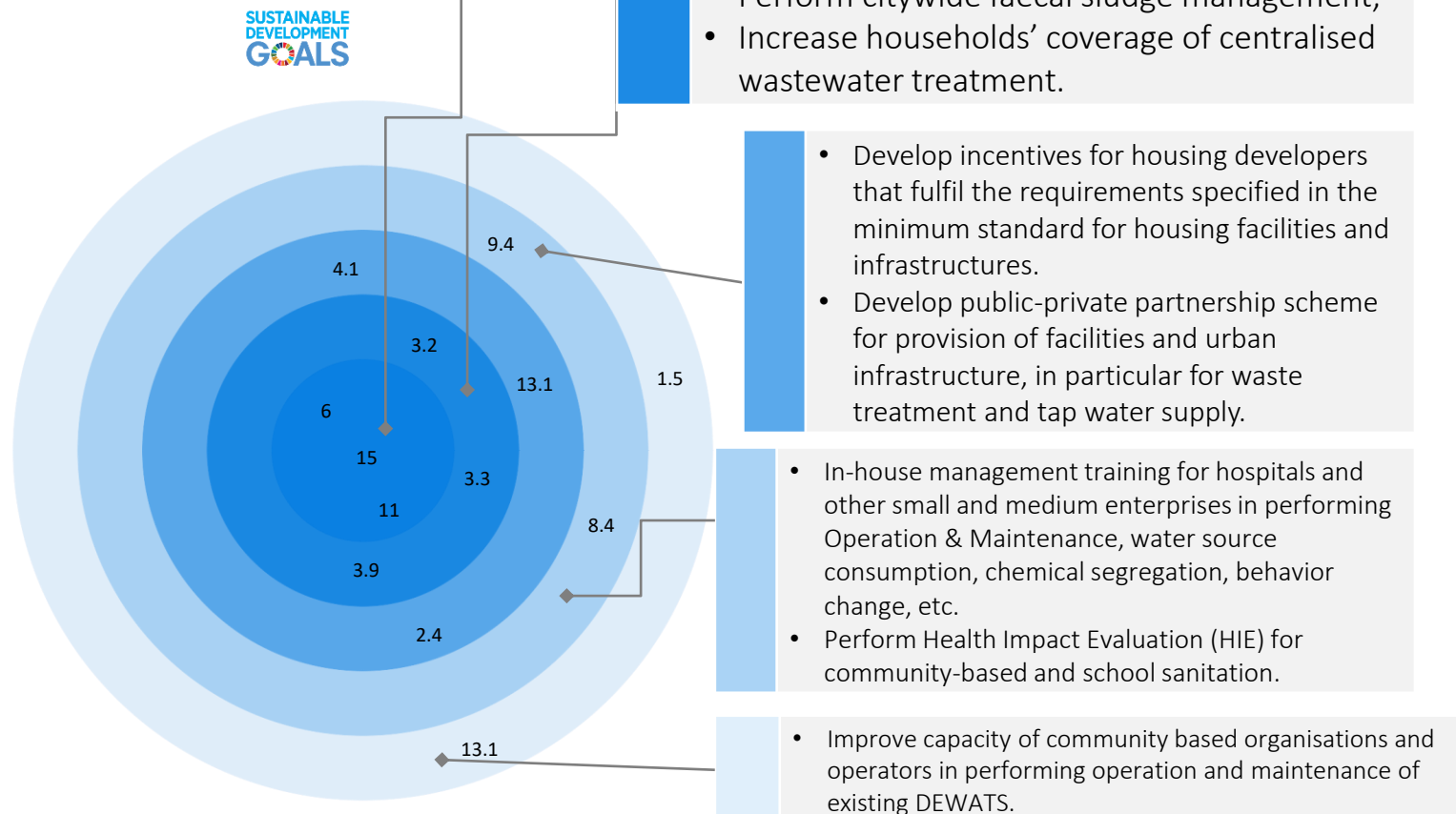
(Picture source: <http://thwink.org/sustain/glossary/LeveragePoint.gif>)

## SDGs Results Dynamic & Execution

The blue circle illustrates interlinkages of SDGs' result indicators pertinent for Sleman. The centre of the circle illustrates the priorities and the aimed results. The circular layers surround it exemplifies leverage of multiple results for achieving prioritised results.

The execution boxes demonstrate the city government's intervention to achieve the aimed results within 2019 – 2030.

The results dynamics and execution boxes are strategic references for annual city planning and budgeting.



# Key messages

Approaches to pave the road for polycentric approaches related to urban wastewater management:

- Start with small, scalable and appropriate, modular, standardized interventions towards integrated approaches, Informed choice (LL1)
- At the same time facilitate the development of the enabling framework (including, HR, legislation, co-production schemes, technology development (LL1)
- Consider GDP when choosing technologies and financing options for water related services (LL2)
- Enabling of a community of practitioners at local, national and regional level (LL3)
- Enabling the development of standards during upscaling as “pilots” will never serve the purpose (LL4)
- Application principles of progressive implementation (legal framework, global monitoring framework, institutional setup, technology) (LL5)
- Assess and apply leverage points for selecting interventions to achieve improvements of specific SDG's , Co-Benefits (LL6)