

First International Conference organized within the framework of
PolyUrbanWaters Research and Project Network (BMBF 2019-2025)

POLYURBAN WATERS

**Polycentric management of urban
waters in fast-growing cities and
peri-urban areas in Southeast Asia**

Dr. Christof Voßeler – Free Hanseatic City of Bremen

Water for the Future in Southeast Asian Cities

**How water-sensitive planning contributes to building
resilience and climate change adaptation processes:
experiences from a German case study**

**24-25th
March 2021**

**Online /
Berlin / Kratie /
Sleman / Vientiane**

Climate Adaptation Strategy

Bremen.Bremerhaven.



Examples of Measures for Watersensitive Cities



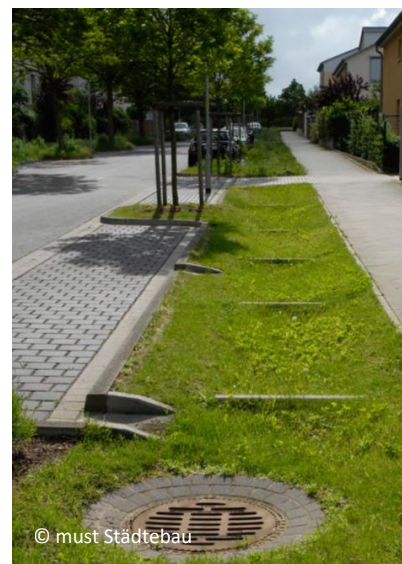
City Trees



Green Roofs



Unsealing

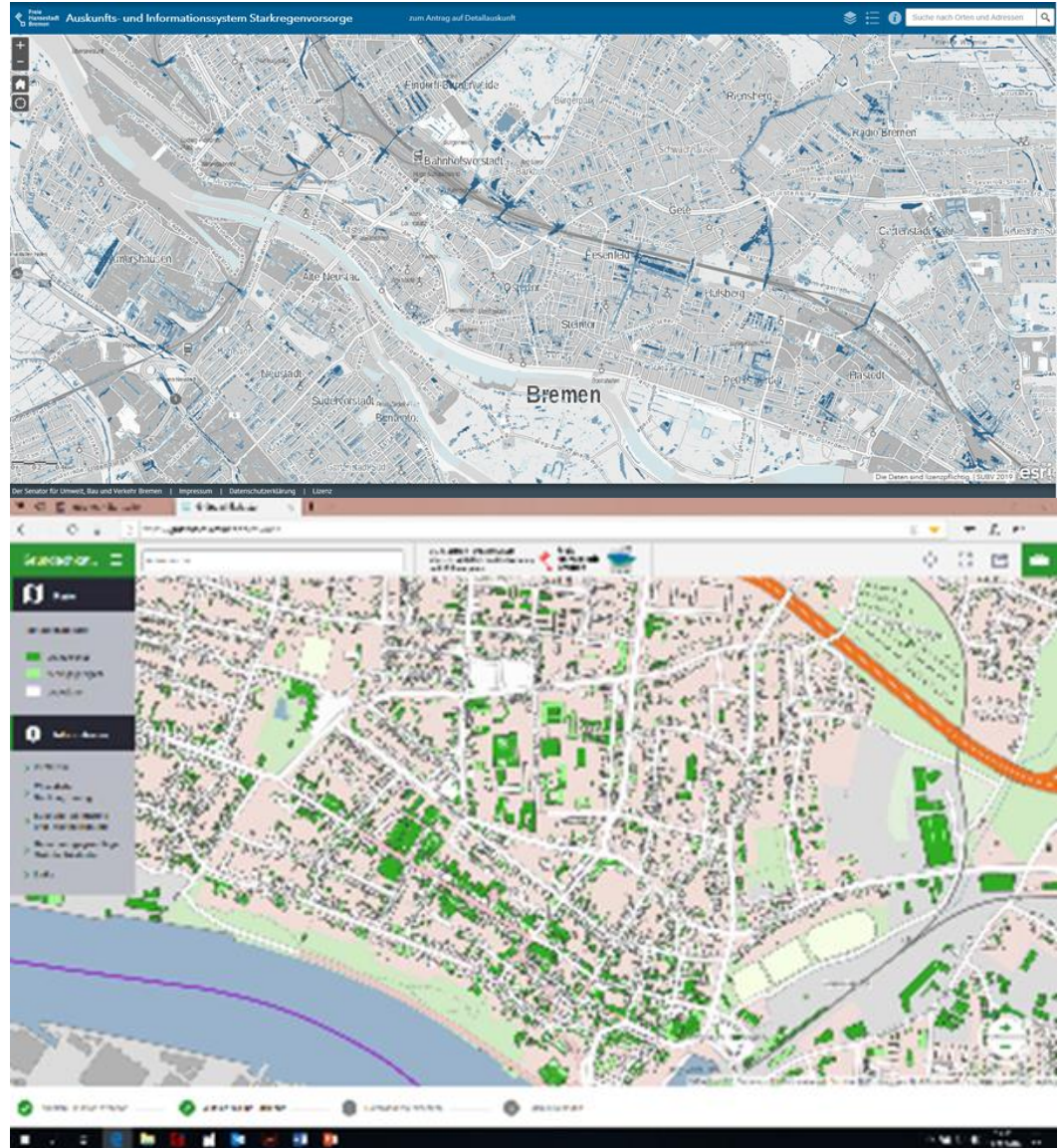


**Decentral
retention and
infiltration**

Examples of Digital Informationstrategies

**Stormwater
Informationssystem**

**Green Roof
Cadastre**



Some Challenges...

Space in built city

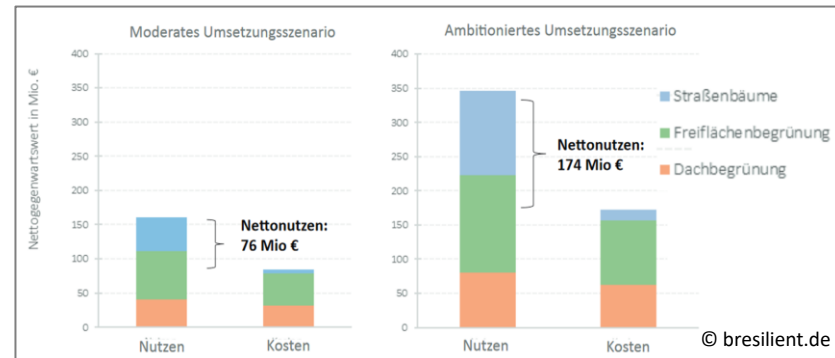


Cleaning/
Maintenance



...more Challenges

**Integrate (co-)benefits
into decision making**



**Integrate into
planning procedures**



**Overcome gap
between strategy and
implementation**



A large, mature tree with a thick trunk and a wide, spreading canopy of leaves. The leaves are a mix of bright yellow and green, suggesting autumn. The tree is situated in a grassy area with other trees in the background. A white rectangular box with dark blue text is overlaid on the middle of the image.

**Main lesson learned:
tackle challenges and develop solutions by
focusing on action**